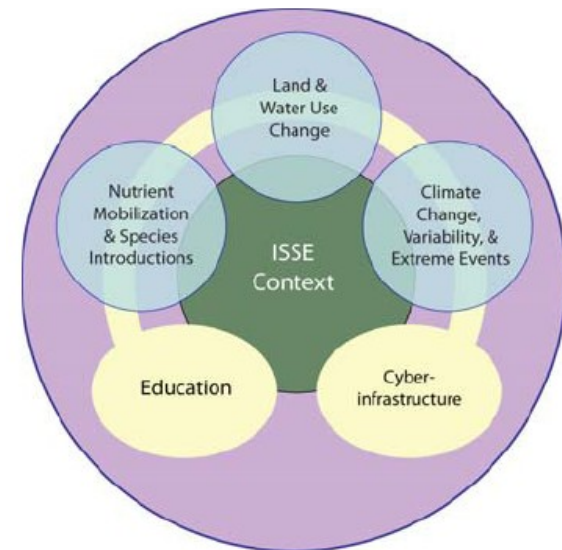
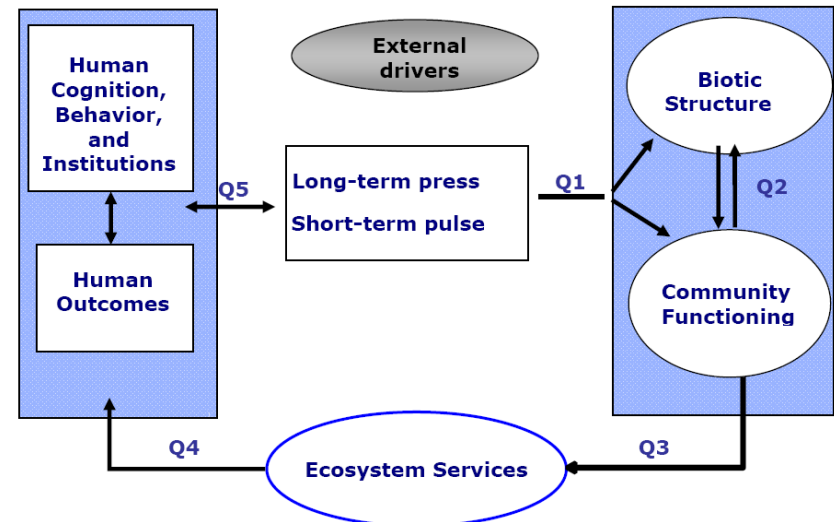


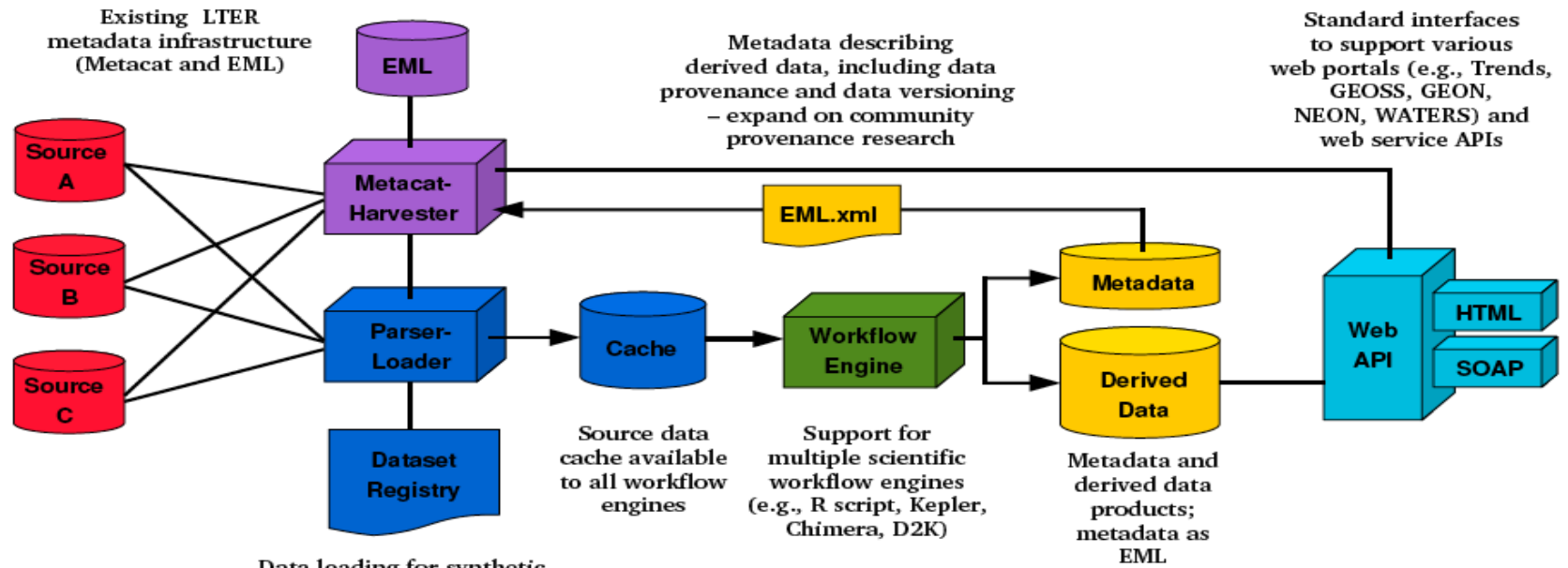
The Long-Term Ecological Research Network



- ✓ Started in 1981
- ✓ 26 Sites – Diverse Biomes
- ✓ Long-Term Perspective
- ✓ Network and Site Level Science

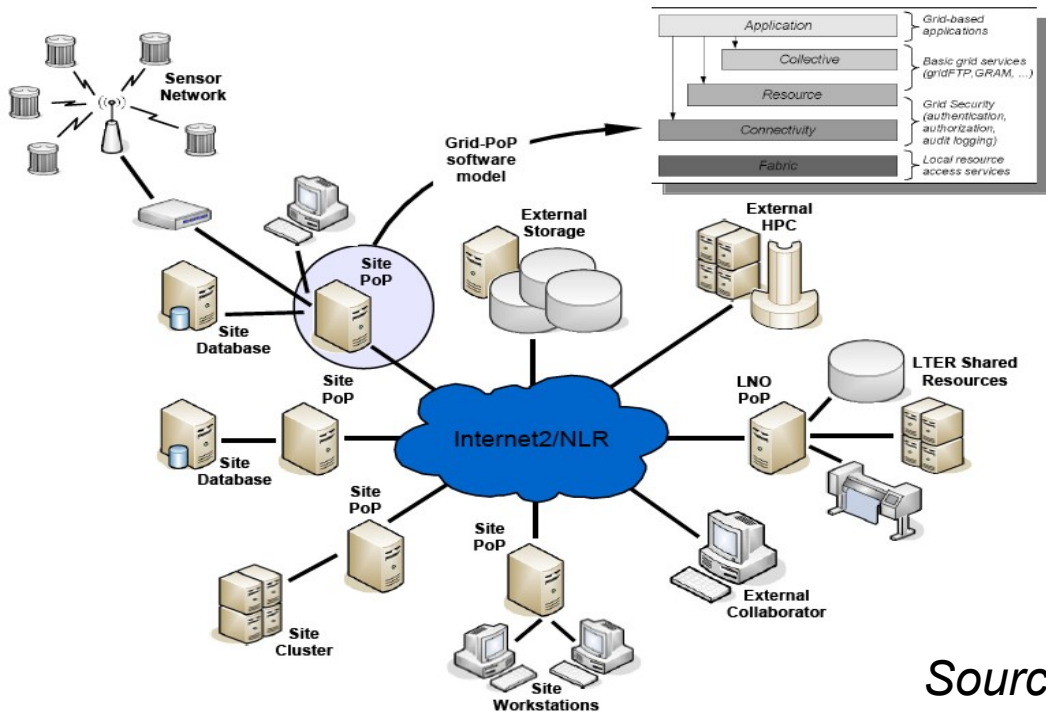
Integrative Science for Society and the Environment





Data loading for synthetic processing based on events (e.g., new data, metadata change)

- Site data/metadata
- Existing infrastructure
- New infrastructure
- Pluggable work flows
- Derived data management
- User interfaces



ACTIVITY		PRODUCT		FRAMEWORK
Data Acquisition, Management and Curation	Develops mature	Databases	Integrated in	Data Services
Data Discovery, Access, and Integration		Middleware		Workflow Systems Architecture
Modeling, Analysis, and Synthesis		Applications		Collaborative Work Environment

Source: LTER CI Strategic Plan 2007



Specific CI Challenges to Facilitating Network Science

1. **significant diversity** in site cyberinfrastructure functionality
2. **integration and delivery** of increasing quantities of data
3. facilitating **scientific collaboration**
4. demand for **trained personnel**
5. ensuring cyberinfrastructure is **science-driven**